

Second Announcement

Innovation and Integration  
in ORL-HNS



IFOS

# IFOS Seoul 2013

20<sup>th</sup> World Congress of  
the International Federation of  
Oto-Rhino-Laryngological Societies  
June 1-5, 2013 · COEX Convention Center

## Important Dates

On-line Registration begins: **January 2, 2012**

Abstract Submission begins: **January 2, 2012**

Early Bird Registration by: **September 30, 2012**

Abstract Submission by: **November 30, 2012**

Call for  
Abstracts

[www.ifosseoul2013.com](http://www.ifosseoul2013.com)



20th World Congress  
LS  
FO  
Seoul Korea 2013



## CONTENTS



Invitations and Messages	3	Scientific Program	17
About IFOS	6	Preliminary Topics	19
IFOS Board and Officers	7	Sponsorship & Exhibition	21
Advisory Committee	9	Tour Program	23
International Faculty	11	Accommodation	25
Congress Overview	13	Registration	26
Program at a Glance	14	Getting to Seoul	27
Congress Venue	15	Registration form	28

# INVITATION

## Dear colleagues and friends,

It is our great honor to invite you to the **20<sup>th</sup> World Congress of the International Federation of Otorhino-Laryngological Societies (IFOS)**, which will be held from **June 1 to 5, 2013** at the COEX Convention and Exhibition Center in Seoul, Korea.

Under the energetic guide of the IFOS Program Advisory Committee, the groundbreaking scientific program will remain faithful to the pattern established in past IFOS World Congresses, while incorporating innovative new elements and technology to provide a lively and compelling educational experience.

For those seeking to expand their knowledge of the field and learn about the most up-to-date advancements and discoveries, the IFOS 2013 cannot be missed. We are also planning special social and tour programs which will give participants a wonderful taste of our unique Korean culture to entertain you and your family during and after the Congress.

The world renowned COEX Convention and Exhibition Center will provide the ideal setting for an exceptional exhibition during which exhibitors from around the world will be able to display their products, services and developments for all IFOS delegates.

With tremendous support from the **Korean Society of Otorhinolaryngology-Head and Neck Surgery (KSORL-HNS)** and the **Korean Society of Otorhinolaryngologic Clinician (KOSOC)**, the organizing committee will deliver the most dynamic and invigorating congress to all of you. We are filled with great excitement and anticipation for what is sure to be an unforgettable and valuable experience.

It is our sincerest hope that, as in past Congresses, IFOS Seoul 2013 will bring all of us together to share in the common goal of advancing and developing the field of Otorhinolaryngology-Head and Neck Surgery.

Best regards,



Chong Sun Kim  
President



Chul Hee Lee  
Secretary General



Eun Chang Choi  
Chairman, KSORL-HNS



Seong Soo Hong  
President, KOSOC

# Local Organizing Committee



20th World Congress  
Seoul Korea 2013

<b>President</b> .....	Chong Sun Kim
<b>Vice-Presidents</b> .....	Hyuck-Soon Chang
	Sang-Heun Lee
	Jong-Ouck Choi
<b>Secretary General</b> .....	Chul Hee Lee
<b>Vice-Secretary General</b> .....	Chae-Seo Rhee
<b>Scientific Program Committee, Chair</b> .....	Won-Sang Lee
<b>Scientific Program Committee, Co-Chairs</b> .....	Sung Hwa Hong
	Min-Sik Kim
	Chae-Seo Rhee
<b>Liaison Committee, Chair</b> .....	Kwang Hyun Kim
<b>Fund Raising Committee, Chair</b> .....	Keehyun Park
<b>Exhibition Committee, Chair</b> .....	Chul Won Park
<b>Social Program Committee, Chair</b> .....	Nam-Yong Do
<b>Publication Committee, Chair</b> .....	Chung-Hwan Baek
<b>Media &amp; Promotion Committee, Chair</b> .....	Young-Mo Kim
<b>Treasurer</b> .....	Hwan Jung Roh
<b>Public Relations Committee, Chair</b> .....	Jungsoo Kim
<b>Planning Committee, Chair</b> .....	Won-Ho Chung
<b>Registration Committee, Chair</b> .....	Yun-Hoon Choung



## MESSAGE FROM THE PRESIDENT OF IFOS



### **Dear friends,**

The International Federation of Oto-Rhino-Laryngological Societies (IFOS) is proud to announce its 20<sup>th</sup> World Congress which will be held from June 1 to 5, 2013 in Seoul, Korea. There have been many recent exciting developments in the science of otorhinolaryngology and in patient care which we plan to examine and discuss at this crucial meeting.

At our previous congresses, ENT professionals around the globe have enjoyed a stimulating scientific and social program. At this congress, we will take a critical look at new and existing clinical treatments.

The scientific program is designed to meet the aim of the 20<sup>th</sup> IFOS World Congress which is "Innovation and Integration in ORL-HNS"; it will consist of plenary sessions, symposia, round table discussions, panel discussions, instructional courses, free paper sessions and poster presentations.

This 20<sup>th</sup> congress in the series should yet again prove to be an important milestone for clinical scientists and practicing health care workers from all disciplines of otorhinolaryngology. Together, we will further the management and treatment of patients and advance the field of otorhinolaryngology.

I really look forward to welcoming you to historic Seoul and to a very successful congress.

**Paulo Pontes**  
**President, IFOS**



## MESSAGE FROM THE GENERAL SECRETARY OF IFOS

### **Greetings!**

Back in 2009 in São Paulo, the International Federation of Oto-Rhino-Laryngological Societies (IFOS) General Assembly chose Seoul and the Korean Society of ORL-HNS to organize the World Congress in 2013. Their preparations have shown that this was an excellent decision. The organizing committee, under the presidency of Chong Sun Kim, has already done a tremendous job preparing every detail of the biggest ORL event.

Recently, the organizing committee met with the IFOS Program Advisory Committee to discuss and organize the layout and components of the scientific program, and they have initiated a great start to an excellent opportunity for all ENT specialists. The World Congress is also a great chance to meet colleagues from every corner of the world, to share clinical experiences and developments and to enjoy the unique culture, cuisine and atmosphere of Korea.

It is a pleasure for me as General Secretary of IFOS to invite all of you to come to Seoul and participate in the world's largest ORL event to increase its scientific and social value.

I hope to see you all in Seoul.

**Milan Profant**  
**General Secretary, IFOS**



# About IFOS



[www.ifosworld.org](http://www.ifosworld.org)

**The International Federation of ORL Societies (IFOS) is a non-political organization representing over 50,000 Otolaryngologists belonging to about 120 member nations.**

IFOS was founded in 1965 and it has evolved to deal on a global basis with the problems of people with ORL disease by means of an active secretariat and committee structure; lobbying the World Health Organization; leading the global program for hearing loss prevention; providing interchange between centers, especially in Europe through the Twin Cities Project; publishing a newsletter and maintaining the interactive website. It has a continuing medical educational role and has developed a model undergraduate curricula; it has now initiated CME conferences between World Congresses and recently started the Worldwide Action "Hearing for All".



## IFOS World Congress

This prestigious scientific event is only held once every four years, under the auspices of the International Federation of Otorhinolaryngological Societies (IFOS), and represents an unparalleled opportunity for ORL physicians and related personnel from every corner of the globe to gather in one place to learn, share and interact with one another.

**The year 2013 marks a historic return of the Congress to Asia, currently one of the world's most rapidly developing regions.**

## History of IFOS World Congresses

World Congress	Year	City and Country
I	1928	Copenhagen, Denmark
II	1932	Madrid, Spain
III	1936	Berlin, Germany
IV	1949	London, England
V	1953	Amsterdam, Holland
VI	1957	Washington D.C., USA
VII	1961	Paris, France
VIII	1965	Tokyo, Japan
IX	1969	Mexico City, Mexico
X	1973	Venice, Italy
XI	1977	Buenos Aires, Argentina
XII	1981	Budapest, Hungary
XIII	1985	Miami, USA
XIV	1989	Madrid, Spain
XV	1993	Istanbul, Turkey
XVI	1997	Sydney, Australia
XVII	2002	Cairo, Egypt
XVIII	2005	Rome, Italy
XIX	2009	São Paulo, Brazil
<b>XX</b>	<b>2013</b>	<b>Seoul, Korea</b>

# IFOS Board and Officers

## Board of IFOS

President	Vice-President	General Secretary
Paulo Pontes (Brazil)	Chong Sun Kim (Korea)	Milan Profant (The Slovak Republic)

## Regional Secretaries

<b>Africa and Middle East</b> .....	Isaac Macharia (Kenya)
<b>Central and South America</b> .....	Héctor Rondón Cardoso (Peru)
<b>Europe</b> .....	Erwin Offeciers (Belgium)
<b>North America and the Caribbean</b> .....	David Kennedy (USA)
<b>South and Western Asia</b> .....	to be announced
<b>South-East Asia and Western Pacific/Oceania</b> .....	Charlotte Chiong (Philippines)

## Executive Board Members

<b>Africa and Middle East</b> .....	Johan Fagan (South Africa), Mohamed Chafik Khalifa (Egypt)
<b>Central and South America</b> .....	José Eduardo Dolci (Brazil), Hector E. Ruiz (Argentina), Carlos Stott (Chile)
<b>East Asia</b> .....	Dato Lokman Saim (Malaysia), Toshiaki Yagi (Japan)
<b>Europe</b> .....	Valerie Lund (United Kingdom), Jacques Magnan (France), Ferhan Öz (Turkey), Heinz Stammberger (Austria)
<b>North America and the Caribbean</b> .....	Dale H. Brown (Canada), Edgard Novelo-Guerra (Mexico)
<b>Oceania</b> .....	Vincent Cousins (Australia)
<b>South and West Asia</b> .....	Mohan Kameswaran (India), Rakesh Prasad Shrivastav (Nepal)
<b>Executive Representative of IFOS 2013 Seoul</b> .....	Chul Hee Lee (Korea)

## Counsellors

Peter W. Alberti (Canada)	Minoru Hirano (Japan)	Desiderio Passali (Italy)
Bobby R. Alford (USA)	Klaus Jahnke (Germany)	Rui Penha (Portugal)
Francisco Antolí-Candela (Spain)	M. Jalisi (Pakistan)	Michel Portmann (France)
Stanisław Bettlejewski (Poland)	Santosh K. Kacker (India)	Suchitra Prasansuk (Thailand)
David Briant (Canada)	Yash Pal Kapur (USA)	Robert Ruben (USA)
Edgar Chiossone (Venezuela)	Nassar Kotby (Egypt)	T. Sacristan Alonso (Spain)
Manuel Joseph D'Cruz (Kenya)	Otacílio Lopes Filho (Brazil)	James B. Snow, Jr. (USA)
Herman Diamant (Sweden)	T. Lundborg (Sweden)	C. M. Meirelles Vieira (Brazil)
Ugo Fisch (Switzerland)	R. D. Martinson (USA)	Hans von Leden (USA)
Jason Hamilton (South Africa)	Gerard McCafferty (Australia)	Jürgen Wendler (Germany)
Lekhumal Hiranandani (India)	Francisco Hernandez Orozco (Mexico)	

# Standing Subspecialty Committees

International Subspecialty Committee			Local Subspecialty Committee	
Subspecialty	Chairs	Members	Chairs	Members
Head and Neck Surgery and Oncology <b>HN</b>	David Eisele (USA)	Johannes J. Fagan (South Africa) Robert L. Ferris (USA) Sheng-Po Hao (Taiwan) C. Rene Leemans (The Netherlands) Adriana O'Byrne (Colombia)	Min-Sik Kim	Se-Heon Kim Kwang-Jae Cho
Rhinology, Allergy and Plastic Facial Surgery <b>RH</b>	Gerhard Rettinger (Germany)	Wyske Fokkens (The Netherlands) Hiroshi Moriyama (Japan) Metin Önerci (Turkey) Pietro Palma (Italy) Tom D.Wang (USA) Wang De Yun (Singapore)	Chae-Seo Rhee	Sung Wan Kim Hong Ryul Jin Soo Whan Kim
Laryngology and Broncho-Oesophagology <b>LB</b>	Jan Olofsson (Norway)	Alaa El Feky (Egypt) Yasuo Hisa (Japan) Murray Morrison (Canada) Marc Remacle (Belgium) David Vokes (New Zealand)	Myung-Whun Sung	Young Hak Park Young Ik Son Seung-Ho Choi
Otology, Neuro-Otology and Skull Base Surgery <b>OT</b>	Marcus Atlas (Australia)	Bruce Black (Australia) Juan Chiossone (Venezuela) Bruce Gantz (USA) Karl Huttenbrink (Germany) David Moffat (United Kingdom)	Sung Hwa Hong	Jun Ho Lee Yun-Hoon Choung
Phoniatrics and Audiology <b>PA</b>	Manfred Gross (Germany)	Philippe de Jonckere (The Netherlands) Mariola Sliwinska-Kowalska (Poland) Mahmoud Youssef (Egypt)	Hong-Shik Choi Lee-Suk Kim	Han Su Kim Hyun Jun Hong Jong Woo Chung Misun Yoon
Pediatric Otolaryngology <b>PE</b>	Tania Sih (Brazil)	Javier Cervera (Spain) Alan Cheng (Australia) Sukgi Choi (USA) Haifa Al Nasser (Saudi Arabia) Bolajoko O. Olusanya (Nigeria) Noboru Yamanaka (Japan)	Sung-Won Chae	Kyung Su Kim Tack-Kyun Kwon
Equilibrium <b>EQ</b>	Mamoru Suzuki (Japan)	John P. Carey (USA) Mauricio Malavasi Gananca (Brazil) Mans Magnusson (Sweden) Michael Strupp (Germany) Yi-Ho Young (Taiwan)	Ja-Won Koo	Kyu Sung Kim HongJu Park

# Advisory Committee

## International Advisory Board

**Ricardo Ferreira Bento (Brazil)**

**Eugene B. Kern (USA)**

**Hesham Negm (Egypt)**

**Desiderio Passali (Italy)**

**George A. Tavartkiladze (Russia)**

**Kaoru Ogawa (Japan)**

## International Advisory Members

\* The list is in the process of being updated.

Albania	Besim Boci
Angola	Filipe Matuba
Argentina	Hugo Anibal Rodriguez
Armenia	Shukuryan Arthur
Australia	Stephen John O'Leary
Austria	Hans Edmund Eckel
Azerbaijan	Azizaga Mehtioglu Talishinskiy
Bahrain	Ahmed J. Jamal
Bangladesh	Kamrul Hassan Tarafder
Belarus	Ludmila Petrova
Belgium	Mark Jorissen
Bolivia	Roberto Romero
Brazil	Richard Voegels, Sung Ho Joo
Brunei	Dato Paduka Joseph
Bulgaria	Dilyana Vicheva
Cambodia	Sea Huong
Cameroon	Geneviève Bengono Toure
Canada	Manohar Bance
Chile	Marcos V. Goycoolea
China	De Min Han
Colombia	Juan Manuel Garcia Gomez
Costa Rica	Arturo Brenes Gamboa
Cote d'Ivoire	Ambroise Ette-Akre
Croatia	Tomislav Baudoin
Cuba	Antonio Paz
Cyprus	Antonis Kounounis
Czech Republic	Jan Betka
Denmark	Lars Holme Nielsen
Dominican Republic	Freddy Ferreras Mendez
Ecuador	Fernando Silva Chacon
Egypt	Mohamed Hegazy
El Salvador	Cabellero Sibrian
Estonia	Kristel Kalling
Ethiopia	Abebe Melaku Wassie
Finland	Anne Pitkäranta
France	Frederic Chabolle
FYR Macedonia	Vladimir Kaev
Georgia	Shota Japaridze
Germany	Karl Martin Hörmann
Ghana	George Wireko-Brobby
Greece	Aristides Athanasiadis-Sismanis
Guatemala	Víctor Manuel Calderón Kiesling
Hong Kong, China	Michael Tong
Hungary	Istvan Sziklai

Iceland	Sigurdur Kristjansson
India	Hemant Ahluwalia
Indonesia	Bambang Hermani
Iran	Ahmad Daneshi, Mohsen Naraghi
Iraq	Nabeel Khadhoori Almkhtar
Ireland	Alexander W. Blayney
Israel	Dan M. Fliss
Italy	Marco Piemonte, Roberto Filipo
Jamaica	Halda Shaw
Japan	Ken-ichi Nibu
Jordan	Fawzi Saheb
Kazakhstan	Rais Toulebaev
Kenya	Mujahid F. Din
Kosovo	Adem Limani
Kuwait	Abdulhameed Al-Muhanna
Kyrgyzstan	Georgy A. Feigin
Laos	Sayadeth Ratanavong
Latvia	Ligiza Kise
Lebanon	Khalil Kharma
Libya	Khaked Mesalaty
Lithuania	Virgilijus Uloza
Luxembourg	E. Panosetti
Malaysia	Abdullah Sani
Malta	Adrian M. Agius
Mexico	Ricardo Antonio de Hoyos Parra
Moldova	Ion Ababii
Mongolia	Bat Erdenechuluun
Morocco	Abdelhamid Benghalem
Myanmar	Thein Tun
Nepal	Hari Bhattarai
Netherlands	Emmanuel Mylanus
New Zealand	Randall Morton
Nicaragua	Jorge Ortega
Nigeria	Abiodun D. Olusesi
Norway	Olav Klausen
Oman	Mazin Jawad Al-Khabouri
Pakistan	Tariq Rafi
Panama	Araceli de la Guardia P.
Paraguay	César Franco
Peru	Miguel García-Calderón Sandoval
Philippines	Gil M. Vicente
Poland	Henryk Skarzynski
Portugal	M. Pais Clemente
Qatar	Ali A. R. Al-Ansari

# Advisory Committee

Romania	Silviu Albu
Russia	Ekaterina Osipenko
Saudi Arabia	Saud Saleh Alsaif
Senegal	El-Hadj Malick Diop
Serbia	Vojko Djukic
Singapore	Christopher Hood-Keng Goh
Slovakia	Pavel Dolezal
Slovenia	Saba Battelino
South Africa	Darlene Lubbe
Spain	Manuel Bernal-Sprekelsen
Sri Lanka	Chandra Jaysasuriya
Sweden	Johan Hellgren
Switzerland	Claudine Gysin
Syria	Akram Al-Hajjar
Taiwan	Chuan Jen Hsu

Tajikistan	Ghafur Khodjamurodov
Tanzania	Baltazar M. Minja
Thailand	Chaweewan Bunnag
Tunisia	Mohsen Hammami
Turkey	Osman Nuri Özgirgin
Ukraine	Dmytro Zabolotnyi
United Arab Emirates	Hussain Mohammad Abdulrahman
United Kingdom	Valerie J Lund, David A. Moffat
Uruguay	Juan Carlos Leiva
USA	P. Ashley Wackym, Jens Ponikau, Timothy TK Jung
Uzbekistan	Saidakran Khasanov
Venezuela	Juan A. Chiossone
Vietnam	Nguyen Thi Ngoc Dung
Yemen	Abdullah Mohammed Al-Hilali
Zimbabwe	Clemence Chidziva

## Local Advisory Members

Byung Hoon Ahn	Tae Young Jang	Guk Haeng Lee	Byung Kuhn Park
Jae Sin Ahn	Eun-Ju Jeon	Dong Jin Lee	Byung Cheol Park
Tae Hwan Ahn	Sung Min Jin	Byung Don Lee	Sang Yoo Park
Soo-Youn An	Beom Cho Jun	Byung-Joo Lee	Seok-Won Park
MOO JIN BAEK	Kwang Yoon Jung	Sang Joon Lee	Seon Tae Park
Byoung Joon Baek	Do Kwang Jung	Sang Heon Lee	See Young Park
Sung Wan Byun	Sang Hoon Kang	Seok Ki Lee	Yong-Jin Park
Sun O Chang	Sung-Ho Kang	Seung Ju Lee	Chan Hum Park
Jung Hyun Chang	Jae Goo Kang	Seung Hwan Lee	Chang Sik Park
Yong Bum Cho	Jun Myung Kang	See Young Lee	Heon Soo Park
Ju Eun Cho	Kwang Moon Kim	Won Yong Lee	Ki Sang Rha
Jin Hee Cho	Ki-sik Kim	Eui-Suk Lee	Young Soo Rho
Hyun Cho	Gi Hwan Kim	Il-Woo Lee	Sang Yul Shim
Seung Hyo Choi	Myung-Gu Kim	Jae Yong Lee	Woojin Shim
Young-Seok Choi	Byung Guk Kim	Jae Hoon Lee	Gwang Cheol Shin
Eun Chang Choi	Bo-Hyung Kim	Joo-Hyung Lee	Seung-Heon Shin
Ick Soo Choi	Seon-Tae Kim	Hyun-Seok Lee	See-Ok Shin
Jae Jin Choi	Sung-Shik Kim	Ho-Ki Lee	Chang Sik Shin
Jinsu Choi	Seung Woo Kim	Hwan Ho Lee	Jin-Ho Sohn
Kwang Chol Chu	Yong-Dae Kim	Heung-Man Lee	Byeong Ho Song
Myung-Hyun Chung	YongBok Kim	Sang Duck Lee	Si Youn Song
Sung Min Chung	Ic-Tae Kim	Sang Chul Lim	Yong Jin Song
Phil-Sang Chung	Jin Pyeong Kim	Yang Gi Min	Changeun Song
Chang-Joon Han	Choon-dong Kim	Hee-Bom Moon	Dong-il Sun
Kyung Wook Heo	Hyung-Jong Kim	Seongmoo Moon	Kyung Tae
Seung Bong Hong	Hyung-Tae Kim	In Hee Moon	Hoon Young Woo
Ki Hwan Hong	Hee-Nam Kim	Jung Gwon Nam	Hoon Shik Yang
Seong Soo Hong	Jae Il Kim	Seung Ha Oh	Dong Hee Yoo
Il-Hee Hong	Yoon Hwan Kim	Kyung-You Park	Sangwon Yoon
Choon Gi Hong	Soo-Kweon Koo	Kuk-Jin Park	Joo-Heon Yoon
Hyun Jeong Hong	Kee Hwan Kwon	Dong Sun Park	Tae Hyun Yoon
Yong Ju Jang	Soon Young Kwon	Dong Joon Park	Ja Bock Yun
Chul Ho Jang	Jaehwan Kwon	Moon-Suh Park	

# International Faculty

\* The list is in the process of being updated.

## International Faculty Members

Jean Abitbol	Paul Castellanos	Karen Gordon
Oliver Adunka	Per Caye-Thomansen	John Graham
Cüneyt Alper	Carlos Cenjor	Ferdinando Grandor
Dario Alpini	Pankaj Chantruverdi	Jan Grote
Ida Amir	Andre Chays	Mauro Gufoni
Patrick Antonelli	Po-Wen Cheng	Alpi Guneri
Giuseppe Appiani	Rayleigh Chiang	Mark Haggard
Sue Archbold	Richard Chole	G Michael Halmagyi
Fazil Ardic	Andrew Clarke	John Hamilton
Miguel Aristegui	Noel Cohen	Bruce Haughey
Bernard Ars	Seth Cohen	Richard Hayden
Antje Aschendorff	Vittorio Colletti	Stefan Heller
Dimitrios Assimakopoulos	Mark Courey	Arthur Hengerer
Daniel A'Wengen	C.W.R.J. Cremers	Stellan Hertegard
Patrick Axon	Luc Crevits	Markus Hess
Vincent Bachy	Gaye Cronin	Paul Heyning
Bernhard Baier	Roger Crumley	Frans Hilgers
Maurizio Barbara	Sharon Cushing	Allen Hillel
Fuad Baroodi	Ron Dagan	Robert Hillman
Dietmar Basta	Chunfu Dai	Michael Hoffer
Wolf-Dieter Baumgartner	Olivier Deguine	Henry Hoffman
Rainer Beck	Craig Derkay	Karl Hörmann
Mara Behlau	Norbert Dillier	Thomas Hummel
Peter Belafsky	Harvey Dillon	Tetsuo Ikezono
Luisa Bellussi	Christian Dubrueil	Takao Imai
Klaus Berger	John Durrant	Armagan Incesulu
Marco Berlucchi	Joanne Enticott	Masahito Inoue
Neil Bhattacharyya	Alfio Ferlito	Stacy Ishman
Assar Bjorne	Paul Flint	Juichi Ito
Andrew Blitzer	Charles Ford	Shinichi Iwasaki
Raymond Boniver	Jesus Franco	Rob Jackler
Sergio Bottero	Ramon Franco	Herman Jenkins
Anu Boulder	Bernard Fraysse	Dan Jiang
David Bowdler	Jeremy Freeman	Jack Jiang
Derald Brackmann	Gerhard Friedrich	Jonas Johnson
Carol Bradford	Neal Futran	Ito Juichi
kristen Brantberg	Arun Gadre	Reda Kamel
Detlef Brehmer	Luis Garcia-Ibanez	Jack Kartush
Robert Briggs	George Gates	Ichimura Keiichi
Matthew Bromwich	Javier Gavilan	Catherine Kendall
Adolfo Bronstein	Ann Geers	Kevin Kerber
Craig Buchman	Eric Genden	Herman Kingma
JM Bumpous	William Gibson	Seiji Kishimoto
Erkan Cakir	Joel Goebel	Vitaly Kisilevsky
Margaretha Casselbrant	Frederik Goplen	Tadashi Kitahara
Jan Casselman	Carlos Gordon	Christoph Klingmann

# International Faculty

\* The list is in the process of being updated.

Izumi Koizuka	John Oas	Wolfgang Steiner
Louis Kowalski	John Oates	Wales Stephens
Dennis Kraus	Kentaro Ochi	Olivier Sterkers
Eike Krause	Alec O'Connor	Robert Stokroos
Ollivier Laccourreye	Lars Odkvist	Timo Stover
Michel Lacour	Yasuo Ogawa	Holger Sudhoff
Roland Laszig	Stephen O'leary	Witold Szyfter
Charles Leemans	Levent Olgun	N. Takeda
Jean Lefebvre	Robert Ossoff	Rinze Tange
Thomas Lenarz	Francesco Ottaviani	George Tavartkiladze
Anke Lesinski-Schiedat	Ali Özdek	Robert Teggi
Hsueh-Yu Li	Levent Özlüoğlu	Theodors Teknos
Charles Limb	Özmen Öztürk	Jochen Tillein
Thomas Linder	Randall Paniello	Hannes Todt
Ruth Litovski	Ben Panizza	Franco Trabalzini
Andrew Lomas	Blake Papsin	Patrice Tran Ba Huy
Hubert Lowenheim	Lorne Parnes	Ralph Tufano
Christy Ludlow	Nicolas Perez	Mats Ulfendahl
William Luxford	Ronen Perez	Erik Ulmer
Leen Maes	Paola Perin	Dominique Vibert
Hans Mahieu	Cesare Piazza	Cesar Villafuerte Jr.
Raphaël Maire	Stefan Plontke	Robert Vincent
Manuel Manrique	Dennis Poe	Ashlew Wackym
Leonardo Manzari	Lea Pollak	Susan Waltzman
Steve Mason	Didier Portmann	Chen-Chi Wang
Joachim Maurer	Gregory Postma	De Yun Wang
Timothy McCulloch	Nicola Quaranta	Jian Wang
Jesus Medina	Angel Ramos	Yukio Watanabe
Ulf Mercke	Niels Rasmussen	Mark Wax
Hidemi Miyazaki	Robert Shepherd	Randal Weber
Soichiro Miyazaki	Thomas Roland	William Wei
Per Moller	Clark Rosen	Gregory Weinstein
William Moretz	Jay Rubinstein	Karl White
Ralph Mösges	Michael Ruckenstein	Janet Wilson
Richard Moxon	Maziar Sadri	Gayle Woodson
Jeff Mulder	Masafumi Sakagami	John Xenelis
Toshihisa Murofushi	Mario Sanna	Hiroshi Yamashita
Charles Myer III	Kiminori Sato	Sertaç Yetişer
Eugene Myers	Amir Sazgar	Robin Youngs
Yasushi Naito	Jochen Schacht	Bevan Yueh
Tsutomu Nakashima	Anne Schilder	Eiji Yumoto
Christiane Neuschaefer-Rube	Levent Sennaroglu	Matthew Yung
Thomas Nikolopoulos	Toru Seo	Thomas Zahnert
Seiji Nimii	Zohara Sharoni	George Zalzal
John Niparko	Thomas Somers	Hans-Peter Zenner
Daniele Nuti	Giuseppe Spriano	Witold Zyfter
Gerard O'Donoghue	Milan Stankovic	

# Congress Overview

Title	20 <sup>th</sup> International Federation of Oto-Rhino-Laryngological Societies (IFOS) World Congress
Theme	Innovation and Integration in ORL-HNS
Period	June 1 (Sat) ~ 5 (Wed), 2013
Location	COEX Convention and Exhibition Center, Seoul, Korea
Hosted by	International Federation of Oto-Rhino-Laryngological Societies (IFOS)
Organized by	IFOS Seoul 2013 Organizing Committee Korean Society of Otorhinolaryngology-Head and Neck Surgery (KSORL-HNS)
Official Language	English
Website	www.ifosseoul2013.com

## Important Dates

- **Deadline for Major Sponsorship Fee Discounts**..... **December 31, 2011**
- **Online Registration Opens**..... **January 2, 2012**
- **Abstract Submission Opens**..... **January 2, 2012**
- **Deadline for Booth Fee Discounts**..... **January 31, 2012**
- **Early Bird Registration by**..... **September 30, 2012**
- **Deadline for Instructional Courses**..... **September 30, 2012**
- **Abstract Submission by**..... **November 30, 2012**
- **Notification of Acceptance**..... **December 31, 2012**
- **Registration of Presenting Authors by**..... **February 28, 2013**



-----  
 Presidential Award  
 -----  
 Travel Awards  
 -----  
 Best Clinical Papers  
 -----  
 Best Research Papers  
 -----  
 Best Posters  
 -----



# Program at a Glance

\*Program subject to change without prior notice

Time	June 1 (Sat)	June 2 (Sun)	June 3 (Mon)	June 4 (Tue)	June 5 (Wed)	Time
8:00		Instructional Course	Instructional Course	Instructional Course	Instructional Course	8:00
9:00		Scientific Program	Scientific Program	Scientific Program	Scientific Program	9:00
10:00	Opening Ceremony	Coffee Break	Coffee Break	Coffee Break	Coffee Break	10:00
11:00	Special Lecture	Scientific Program	Scientific Program	Scientific Program	Scientific Program	11:00
12:00	Exhibit Ribbon Cutting					12:00
13:00	Sponsored Symposia Poster Visit	Sponsored Symposia Poster Visit	Sponsored Symposia Poster Visit	Sponsored Symposia Poster Visit	Special Lecture Closing Ceremony	13:00
14:00	Scientific Program	Scientific Program	Scientific Program	Scientific Program		14:00
15:00	Coffee Break	Coffee Break	Coffee Break	Coffee Break		15:00
16:00	Scientific Program	Scientific Program	Scientific Program	Scientific Program		16:00
17:00						17:00
18:00~	Welcome Reception		Korean Night	Gala Dinner		18:00~

Exhibition : June 1~5 Registration : May 31~June 5

## Social Events

### Opening Ceremony

The opening ceremony will set the tone for the Congress with official remarks highlighting the unique cultural history of Korea.

### Exhibit Ribbon Cutting Ceremony

The ribbon cutting ceremony will kick-off the opening of the exhibition.

### Welcome Reception

Delegates will take part in the welcome reception in the exhibition hall, with great wine and hors d'oeuvres served, allowing you the opportunity to mix and mingle with colleagues and friends while exploring the exhibits.

### Korean Night

A special night highlighting Korean culture with food and special performances

### Gala Dinner

Featuring fascinating Korean musical and dance performances, this grand finale of the Congress will present a memorable night in Seoul with delightful food and wonderful friends (USD 100/P).

### Closing Ceremony

Participants will review the highlights and achievements of the Congress and look ahead to the 21<sup>st</sup> IFOS Congress in the newly selected host city.



# Congress Venue

## COEX Convention and Exhibition Center

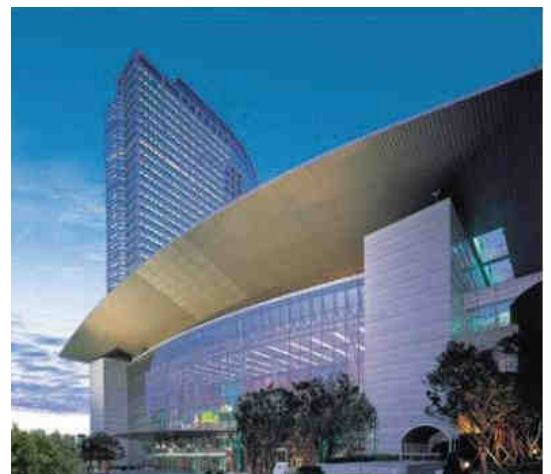
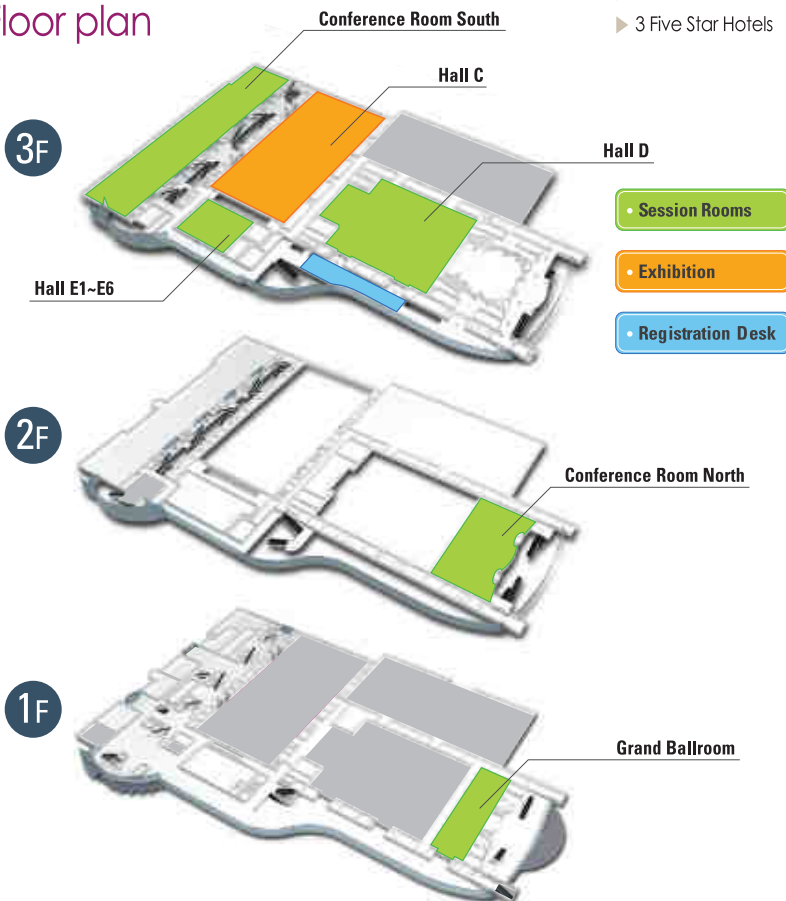
COEX is Korea's top event venue and has helped to earn Seoul a ranking in the top ten major international convention cities by the International Congress and Convention Association (ICCA). The center itself is four-floor meetings venue with over 450,000m<sup>2</sup> of total floor space. Over 200 exhibitions and 2,000 conferences are held each year at COEX including the successfully held G20 Summit in 2010.



- ▶ 51 Dividable Meeting Rooms
- ▶ 4 Multi-purpose Exhibition Halls
- ▶ 36,007m<sup>2</sup> of Exhibition Space
- ▶ State-of-the-art AV Systems
- ▶ 3 Five Star Hotels

- ▶ 200 Stores and over 100 Restaurants
- ▶ Direct Access to Seoul Subway
- ▶ Direct Bus Service to and from Incheon International Airport
- ▶ Eco-friendly 'Green' Industry Leader

## Floor plan



# Seoul, the Soul of Asia

Visitors to Seoul are often struck by the city's incredibly diverse atmosphere and multi-faceted profile. Evidence of Korea's fabled economic development and technological initiative abounds, yet Seoul's illustrious history, dating back to the founding of the Joseon Dynasty in 1392, has hardly been ignored. Grand imperial palaces and serene temples have been meticulously preserved amongst the towering skyscrapers and busy urban sprawl that have come to be associated with modern Seoul. Recently, the city has been making a solid push to re-establish its natural beauty and environmentally friendly side. In addition to the lush forests and mountains which encircle Seoul, successful projects to landscape and restore the Cheongyecheon Stream and Hangang River banks have provided a wonderful refuge from the pressures of urban life.

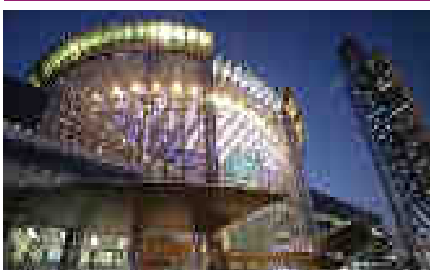
## Culture, mixture of old & new



## Cuisine, food for well-being



## Hi-Tech, fast and fascinating



# Scientific Program

The IFOS 2013 Scientific Program will explore a wide variety of topics, providing participants with an exciting forum to exchange the latest experiences and discoveries in Otorhinolaryngology on a global scale.

## Session Abbreviations & Types

<b>SL</b>	Special Lecture	A special lecture for all participants during the Opening & Closing Ceremonies
<b>KL</b>	Keynote Lecture	A special presentation by a distinguished expert in the field offered by each subspecialty
<b>RT</b>	Round Table	A review and discussion of a specific issue to share opinions and to present multiple perspectives on the issue
<b>PD</b>	Panel Discussion	A discussion of a controversial issue by experts in the field to further clarify and evaluate the issue (presentation of opposite opinions and voting by the audience)
<b>SP</b>	Symposium	A series of presentations by experts in a particular field on new findings and experiences with a view to making recommendations concerning the topic under discussion
<b>IC</b>	Instructional Course	Practical approaches in specific subjects
<b>FO</b>	Free Paper (Oral Presentation)	<b>Online abstract submission opens: January 2, 2012</b>
<b>FP</b>	Free Paper (e-Poster Presentation)	
<b>FV</b>	Free Paper (Video Presentation)	
<b>SS</b>	Sponsored Symposium	Organized by a sponsoring company
<b>ME</b>	Meeting	Organized by a society, clinic, etc.

## Subspecialties

<b>HN</b>	Head and Neck Surgery and Oncology
<b>RH</b>	Rhinology, Allergy and Plastic Facial Surgery
<b>LB</b>	Laryngology and Broncho-Oesophagology
<b>OT</b>	Otology, Neuro-Otology and Skull Base Surgery
<b>PA</b>	Phoniatrics and Audiology
<b>PE</b>	Pediatric Otolaryngology
<b>EQ</b>	Equilibrium

## Call for Symposia

Societies, clinics and all other ENT-related organizations are welcome to submit proposals for symposia at IFOS 2013.

The IFOS Scientific Program Committee will review all proposals prior to acceptance. Notification of acceptance will follow in due time and each symposium participant must personally register for the congress following acceptance.

(\* Please note that acceptance of a symposium proposal does not imply that the 20<sup>th</sup> IFOS World Congress Seoul 2013 will provide funding of any kind for symposium organizers, chairs or speakers. A session room with a projector, laptop computer and electricity will be provided by the Organizing Committee.)

Interested organizations should submit a proposal to [scientific@ifosseoul2013.com](mailto:scientific@ifosseoul2013.com) including the following:

- ✓ Name of the Organization
- ✓ Symposium Title
- ✓ Symposium Description
- ✓ Brief Background Information (objectives and description focusing on the theme)
- ✓ Structure of the Session
- ✓ Speakers, Chairs and Contact Information



Call for  
Abstracts

## Call for Abstracts

The Scientific Program Committee of the 20<sup>th</sup> IFOS World Congress welcomes the submission of abstracts for oral, poster or video presentations. On-line submission is highly encouraged. More details and submission instructions are available on the congress website at [www.ifosseoul2013.com](http://www.ifosseoul2013.com)

## e-Posters

Accepted posters will be displayed in electronic format within the exhibition area.

This convenient display system will allow participants to browse and view posters anytime during the congress.

## Apply for Instructional Courses

Designed to provide IFOS Seoul 2013 delegates with advanced knowledge in a particular area of expertise.

**Send your lecture proposals to be a part of the Scientific Program Faculty.**

Format: 50 minutes (depending on availability)



Apply by e-mail to  
[scientific@ifosseoul2013.com](mailto:scientific@ifosseoul2013.com)

# Preliminary Topics

## General

- Medical History
- Medical Ethics
- Education Program, Global Issues
- Complementary Alternative Medicine
- Genetics
- Stem Cell
- Robotic Surgery
- Epidemiology

## Otology, Neuro-Otology and Skull Base Surgery -OT

- Cochlear Implant
- Hearing Aid
- Implantable Hearing Aid
- Auditory Brainstem Implant
- Drug Delivery Techniques
- Auditory Neuropathy
- Chronic Otitis Media
- Eustachian Tube Function
- Cholesteatoma
- Labyrinthine Fistula
- Tympanoplasty
- Ossiculoplasty
- Mastoidectomy
- Vestibular Schwannoma
- Facial Nerve Schwannoma
- Glomus Tumor
- Skull Base Surgery
- Radiosurgery
- Facial Nerve Paralysis
- Tinnitus
- Robotic Surgery in Otology
- Genetics in Otology
- Basic and Translational Researches

## Head and Neck Surgery and Oncology-HN

- Oral Cavity and Oropharyngeal Cancer
- Nasopharyngeal Cancer: State-of-the-art
- Conservation Laryngeal Surgery
- Hypopharyngeal Cancer
- Salivary Gland Tumor
- Thyroid Cancer and Hyperparathyroidism
- Cutaneous Cancer of the Head and Neck
- Role of Surgery in the Multidisciplinary Team
- Salvage and Palliative Surgery
- Neck Dissection
- Robotic Surgery in the Head and Neck
- Reconstructive Surgery of Head and Neck Cancer
- Chemo-Radiotherapy
- Targeted Therapy
- HPV and Head and Neck Cancer
- QOL after Treatment of Head and Neck Cancer
- Head and Neck Cancer in Developing Country

## Phoniatrics and Audiology-PA

- History and Development
- Motor Speech and Voice Disorder
- Stuttering and Cluttering
- Singing Voice Disorder
- Muscle Tension Dysphonia
- Self-Assessment of Dysphonia
- Laryngeal EMG
- Central Auditory Processing
- Auditory Plasticity
- Auditory Evoked Potential
- Music Perception
- Genetic Research in Newborn Hearing Screening
- Newborn Hearing Screening
- Hearing Aids
- Recent Progress of Audiology in Adult
- Training Programs for Medical Specialists in Audiology
- Electrophysiological Measures in Cochlear Implants
- Education and (Re)Habilitation Program of Cochlear Implants

## Rhinology, Allergy and Plastic Facial Surgery-RH

- Epidemiology of Rhinology
- Chronic Rhinosinusitis
- Allergic Rhinitis and Non-Allergic Rhinitis
- Immunotherapy for Allergic Rhinitis
- Obstructive Sleep Apnea
- Olfaction and Taste
- Sinonasal Tumors
- Innovative Techniques in Diagnosis and Treatment
- Septum and Turbinate Surgery
- FESS, MIST and Balloon Sinuplasty
- Endoscopic Skull Base Surgery
- Image Guided Surgery
- Alternative Medicine in Rhinology
- Basic and Translational Researches
- Rhinoplasty
- Otoplasty
- Facial Trauma
- Facial Reconstruction and Rejuvenation

## Pediatric Otolaryngology-PE

- Acute Otitis Media
- Congenital Hearing Loss
- Congenital Aural Atresia
- Congenital Cholesteatoma
- Otitis Media with Effusion
- Vertigo in Children
- Pediatric Sinusitis
- Pediatric Sleep Disorder
- Pediatric Allergic Rhinitis
- Congenital Airway Anomaly
- Airway Stenosis
- Tonsil, Adenoids
- Vascular Neoplasm
- Biofilm
- Vaccination
- Tracheotomy in Children

## Laryngology, Broncho-Oesophagology-LB

- Updates on Techniques for Laryngeal Imaging
- Communication Disorders and Laryngology
- Adductor Spasmodic Dysphonia
- Sulcus Vocalis
- Aging Voice
- Pitch-changing Surgery
- Exercise-induced Vocal Fold Dysfunction
- Laryngoplasty for Vocal Fold Paralysis
- Surgery on the Arytenoids
- Bilateral Vocal Fold Paralysis
- Foreign Body in Aerodigestive Tract
- Dry Mouth / Oral Mucosal Diseases / Drooling
- Laryngeal Trauma
- Laryngopharyngeal Reflux
- Laryngotracheal Reconstruction
- Tracheotomy
- Aspiration and Dysphagia
- Cervical Diverticulum
- Recurrent Respiratory Papillomatosis
- Laryngeal Premalignant Lesions
- Laser in Laryngology

## Equilibrium-EQ

- BPPV
- Meniere's Disease
- Superior Canal Dehiscence Syndrome
- Migraine, Anxiety and Vertigo
- Acute Spontaneous Vertigo
- Posture and Gait
- Vestibular Function Test
- Vestibular Rehabilitation
- Vestibular Prosthesis
- Cochlear Implant and Vestibular Function
- Vestibular Issue on 8th Nerve and Beyond
- Vestibular Problem in Sports and Trauma

# Sponsorship

Levels	Up to Dec. 31, 2011	From Jan. 1, 2012 to Sep. 30, 2012	From Oct. 1, 2012
Diamond	USD 400,000	USD 440,000	USD 484,000
Platinum	USD 300,000	USD 330,000	USD 363,000
Gold	USD 200,000	USD 220,000	USD 242,000
Silver	USD 100,000	USD 110,000	USD 121,000

\*VAT (10%) is not included

## How to Apply

Once you have chosen your desired sponsorship level, submit the completed Sponsorship Pledge Form via e-mail to [exhibition@fosseoul2013.com](mailto:exhibition@fosseoul2013.com) or by fax to **+822-3476-8800**. Application forms can be downloaded from the Congress website [www.ifosseoul2013.com](http://www.ifosseoul2013.com) Please contact the Congress Secretariat for more detailed information.

## Payment Conditions

Sponsorship fees can be paid in three (3) installments. A minimum deposit of at least 30% of the total amount must be submitted along with the signed pledge form to confirm your sponsorship by no later than December 31, 2011. 30% of the total amount must be paid by September 30, 2012 and the remaining balance must be paid by December 31, 2012. Payment schedule and dates will be indicated in a contract. Fees are required in a full, lump sum payment for sponsorship applications submitted from January 1, 2013.

## Cancellation Policy

All cancellations must be made in writing. 50% of the initial deposit will be retained for cancellations requested by September 30, 2012, and 85% of the initial deposit will be deducted for cancellations requested by December 31, 2012. No refunds will be made for cancellations made on or after January 1, 2013.



- ▶ Location : Exhibition Hall C, COEX
- ▶ Period : June 1 - 5, 2013
- ▶ Hours of Operation : 9:00 - 17:00
- ▶ Total Exhibition Area : 10,348m<sup>2</sup>

## Booth Types

The standard booth is 4m x 3m, and can be purchased in multiples of 12 square meters. Only shell scheme booths will be provided.

A limited number of 2m x 3m booths are available for non-profit organizations or associations at a discounted rate on a first-come, first-served basis.

## Booth Fees

	Up to January 31, 2012	After February 1, 2012
Per square meter (m <sup>2</sup> )	USD 800	USD 880
Non-Profit Booth	USD 600	USD 660

\*VAT (10%) is not included in listed fees.

\*Island-type booths are reserved for major sponsors only. Please contact the Congress Secretariat for details.

### ◆ Exhibition Fees Include :

- Four (4) exhibitor badges per twelve (12) square meters of booth space (exhibitor badges do not grant access to scientific sessions). Additional exhibitor badges may be purchased at a rate of \$20 per badge.
- Company listing in the Preliminary and the Final Program and the Congress website
- Exhibitor contact details and company profile in the final Exhibition Directory
- Exhibitor's name on a fascia board, pytex, 1 information desk, 1 spotlight per every 3m<sup>2</sup>, 2 folding chairs
- Furniture, electricity, internet and telephone connections must be arranged separately by the exhibitor.

### ◆ Booth Site Allocation

First option and preference will be given to Diamond, Platinum, Gold and Silver sponsors. Following major sponsors, the organizer will allocate booths respecting, whenever possible, order of application submission, booth size and deposit payment date. Once a site has been allocated to an exhibitor, the location may not be changed without the Organizer's written approval.

### ◆ How to Apply

Submit the completed Exhibition Application Form, available on the Congress website [www.ifosseoul2013.com](http://www.ifosseoul2013.com), to the Congress Secretariat via :

**E-mail : [exhibition@ifosseoul2013.com](mailto:exhibition@ifosseoul2013.com) Fax : +822-3476-8800**

Submit a minimum deposit of 50% of the total price along with the signed application form to confirm your booth rental.

\*Exhibition space confirmed from January 1, 2013 will require a full, lump sum payment.

\*Remaining amounts must be paid by no later than December 31, 2012 for all rentals.

### ◆ Cancellation Policy

All cancellations must be submitted in writing. 50% of the initial deposit will be deducted for cancellations requested by September 30, 2012, and 85% of the initial deposit will be deducted for cancellations requested by December 31, 2012. No refunds will be made for any cancellation after January 1, 2013.

# Tour Program

IFOS Seoul 2013 offers an exciting tour program which includes daily tours and pre/post congress tours. All tours are designed to give participants an authentic Korean experience, bringing visitors face to face with Korea's natural beauty, abundant historical sites and modern amenities. Congress participants are encouraged to take the opportunity to explore the real Korea through various experiences offered by the tour program. The following program is tentative and subject to change without notice.

## Half / Full Day Tours



### Seoul Tower and Changdeokgung Palace

This tour takes participants to two of Seoul's most well-known landmarks. Constructed atop the famous Mt. Namsan located almost directly in the heart of Seoul, the 236 meter high Seoul Tower was opened to the public in 1980 and was quickly recognized for its unparalleled panoramic views of the city. Changdeokgung Palace was the principal palace used by many Joseon kings, and was designated a UNESCO World Cultural Heritage Site in December 1997.



### Templelife at Jinkwansa Temple

Templelife is a 2 to 4 hour long temple program designed to give participants a better understanding of Korean Buddhism and the life of monks through first-hand experience. The main activities include a tour of the temple, Chamseon (zen meditation) and Dado (tea ceremony).



### DMZ (Demilitarized Zone), Hyeri Art Village and Seoul World Cup Stadium

This trip to the last remaining relic of the Cold War includes a tour through the famed 3<sup>rd</sup> tunnel which was constructed by North Koreans to infiltrate the South. Visitors will also have an opportunity to watch North Koreans going about their daily lives through a telescope at Dora Observatory. The tour will continue to the Hyeri Art Village following a final stop, which will bring participants to the Seoul World Cup Stadium, the site of the Opening Ceremony and Opening Game of the 2002 FIFA World Cup jointly hosted by Korea and Japan.



### Korean Folk Village and Icheon Ceramic Village

Minsokcheon, the Korean Folk Village is an open-air folk museum and international tourist attraction for both Korean and foreign visitors. It is the home of the true Korean heritage where visitors can experience the authentic atmosphere with over 260 traditional houses reminiscent of the late Joseon Dynasty. At Icheon Ceramic Village, participants can experience making of traditional Korean ceramics.



### Gyeongbokgung Palace, Insadong Antique Street, Taekwondo Performance and Seoul Museum of History

Gyeongbokgung Palace is the most comprehensive and grandest of the five palaces of the Joseon Dynasty. Along the streets of Insa-dong, visitors are lured by hundreds of shops brimming with traditional ink paintings, calligraphic works, antique furniture, curios, handicrafts, ceramics, and modern style traditional dresses. Experience Taekwondo performance - Seoul City offers Taekwondo programs for international tourists. Visitors can watch a performance before taking part in the classes. Seoul Museum of History - reflects on the history and traditional culture of Seoul.



### Nami Island and Garden of Morning Calm

Namiseom (Island) is 63 km away from Seoul in the direction of Chuncheon, and is famous for its beautiful tree lined roads. The Garden of Morning Calm, a 30,000m<sup>2</sup> flower garden is open year-round for its visitors to enjoy the thousands of varieties of flowers coupled with pine trees that release an unforgettable aroma into the air.



### Han River Dinner Cruise (Evening)

A symbol of Seoul, the Han River runs through Seoul east to west, with an average depth of 2.5m and width of 175m. The river is crossed by 22 bridges and there are excursion boats plying between Yeouido and Jamsil.

# Tour Program

## Pre / Post Congress Tours



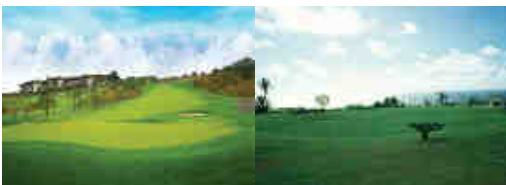
### Woljeongsang Temple Stay

At Woljeongsang, participants will have a chance to experience Korean Buddhist traditional culture and the practice of Seon Meditation. This 24-hour overnight program will allow participants to relax, reflect and revitalize themselves. Temple stays also provide opportunities to partake in various traditional practices and ceremonies. Participants can find their "true selves" amidst the harmony of nature during the temple stay.



### Jeju Island

Just an hour's flight south of Seoul, Jeju Island's temperate climate, beautiful natural scenery, sparkling beaches and abundance of leisure activities make it one of the most popular destinations for Koreans as well as visitors from other parts of the world.



### Jeju Island Golf Outing

This tour will include a golf outing at one of Jeju Island's famous courses in addition to stops at other scenic locations.



### Gyeongju

The tour will begin with Bulguksa, one of Korea's best known temples and a testimony to both the skill of Silla architects and the depth of Buddhist faith at the time. The Gyeongju National Museum, a place of compelling interest, preserves much of the Silla heritage, including magnificent gold crowns, pottery, Buddhist artifacts, and stone sculptures. The museum also houses the Divine Bell of King Seongdeok the Great, also referred to as the legendary Emille Bell, one of Asia's largest and most resonant bells - nineteen tons of bronze standing eleven feet high. Yangdong Folk Village is Korea's largest traditional village, showcasing the traditional culture of the Joseon Dynasty and the beautiful natural surroundings.



### Seorak Mountain

Seoraksan (Mountain), the third highest mountain in South Korea, is one of the most beloved sites for Koreans. The tour will start with a visit to the Chamsori Sound Museum which houses a collection of 4,000 sound machines. Seorak Waterpia is one of Korea's largest theme parks offering a wide variety of outdoor leisure activities and hot spring facilities. The tour to Seorak Mountain also includes stops at Goseong Unification Observatory and Woljeonsa temple stay. (Refer to temple stay above)



### Beijing, China

Less than two hours away from Seoul by air, Beijing is the place to explore the rich history and beautiful culture. The tour begins with visits to Temple of Heaven, a complex of Taoist buildings, Tiananmen Square, the largest city square in the world, Forbidden City, the world's largest palace complex covering 74 hectares just the north of Tiananmen Square, and Summer Palace which was listed as one of the World Heritage Sites by UNESCO in 1998. The day will end with a fascinating show of Chinese acrobatics. The last part of the tour is dedicated to a whole day tour of one of the seven wonders of the medieval world, the Great Wall of China.



### Tokyo & Nagoya, Japan

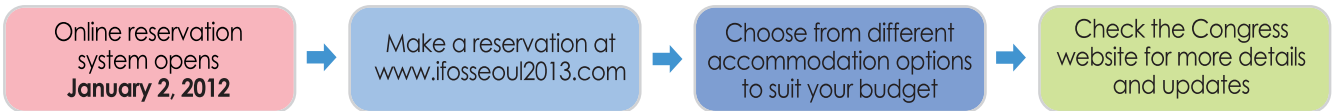
Tokyo is one of the most popular getaway spots for Koreans for its proximity and a variety of entertainment. The trip explores both historical and modern sites of one of the largest and vibrant cities in the world. Participants will enjoy the wonderful architecture and historic scenery of Nagoya Castle, Asakusa Kannon Temple and Meiji Shrine. A day in Shinjuku and Odaiba District will offer an opportunity to sock in Tokyo's dynamic entertainment, shopping and business center. The trip also includes an interesting visit to Toyota Commemorative Museum of Industry & Technology.

For more detailed information, please visit the Congress website: [www.ifosseoul2013.com](http://www.ifosseoul2013.com)

# Accommodation

## How to Book a Room

IFOS 2013 participants are entitled to special hotel rates available through the official housing bureau. Reservations can be made online on a first-come, first-served basis. Please do not contact the hotels directly. The housing bureau will be available for all your hotel reservation inquiries.



## Shuttle Service

Shuttle service between the Congress venue and hotels will be available for all participants.

## Congress Hotels



### 5 Star Hotels ★★★★★

No	Hotel	Homepage	No	Hotel	Homepage
1	Grand InterContinental Seoul	<a href="http://www.seoul.intercontinental.com">http://www.seoul.intercontinental.com</a>	6	JW Marriott Hotel Seoul	<a href="http://www.marriott.com">http://www.marriott.com</a>
2	COEX InterContinental Seoul	<a href="http://www.seoul.intercontinental.com">http://www.seoul.intercontinental.com</a>	7	Lotte Hotel World	<a href="http://www.lottehotelworld.com">http://www.lottehotelworld.com</a>
3	Oakwood Premier Coex Center Seoul	<a href="http://www.oakwoodpremier.co.kr">http://www.oakwoodpremier.co.kr</a>	8	Renaissance Seoul Hotel	<a href="http://www.renaissanceseoul.com">http://www.renaissanceseoul.com</a>
4	Park Hyatt Seoul	<a href="http://seoul.park.hyatt.com">http://seoul.park.hyatt.com</a>	9	The Ritz-Carlton Seoul	<a href="http://www.ritzcarltonseoul.com">http://www.ritzcarltonseoul.com</a>
5	Imperial Palace Hotel	<a href="http://www.imperialpalace.co.kr">http://www.imperialpalace.co.kr</a>			

### 4 Star Hotels ★★★★★

No	Hotel	Homepage	No	Hotel	Homepage
10	Best Western Premier Gangnam Hotel	<a href="http://www.bestwestern.com">http://www.bestwestern.com</a>	17	Hotel Samjung	<a href="http://www.samjunghotel.co.kr">http://www.samjunghotel.co.kr</a>
11	Ellui Hotel	<a href="http://www.ellui.com">http://www.ellui.com</a>	18	Seoul KyoYuk MunHwa HoeKwan	<a href="http://www.temf.co.kr">http://www.temf.co.kr</a>
12	Hotel La Mir	<a href="http://www.hotellamir.co.kr">http://www.hotellamir.co.kr</a>	19	Seoul Olympic Parktel	<a href="http://www.parktel.co.kr">http://www.parktel.co.kr</a>
13	Hotel Prima Seoul	<a href="http://www.prima.co.kr">http://www.prima.co.kr</a>	20	Seoul Palace Hotel	<a href="http://www.seoulpalace.co.kr">http://www.seoulpalace.co.kr</a>
14	Novotel Ambassador Gangnam	<a href="http://www.ambatel.com">http://www.ambatel.com</a>	21	Hotel Blue Pearl	<a href="http://hotelbluepearl.com">http://hotelbluepearl.com</a>
15	Ramada Seoul	<a href="http://www.ramadaseoul.co.kr">http://www.ramadaseoul.co.kr</a>	22	The Riverside Hotel	
16	Riviera Seoul	<a href="http://www.hotelryiviera.co.kr">http://www.hotelryiviera.co.kr</a>	23	Young Dong Hotel	<a href="http://www.youngdonghotel.co.kr">http://www.youngdonghotel.co.kr</a>

### Residences

No	Hotel	Homepage	No	Hotel	Homepage
24	Artnouveau City	<a href="http://www.ancsr.com">http://www.ancsr.com</a>	27	Dormy Inn Seoul	<a href="http://www.dormy.co.kr">http://www.dormy.co.kr</a>
25	Samsung Station CasaVille	<a href="http://www.casavillesamsung.co.kr">http://www.casavillesamsung.co.kr</a>	28	Hotel Provista	<a href="http://www.provista.co.kr">http://www.provista.co.kr</a>
26	Seoul Residence	<a href="http://www.seoulresidence.co.kr">http://www.seoulresidence.co.kr</a>	29	Coatel Cherville	<a href="http://www.coatel.co.kr">http://www.coatel.co.kr</a>

## How to register

Register online at [www.ifosseoul2013.com](http://www.ifosseoul2013.com) or complete the attached Registration Form and mail it to the Congress Secretariat. Participants are encouraged to register as early as possible to take advantage of discounted registration fees.

	Early Bird Until Sep. 30, 2012	Advanced Until Nov. 30, 2012	Standard Until Feb. 28, 2013	On-site From Mar. 1, 2013
Physicians	USD 650	USD 750	USD 850	USD 950
Fellows/Residents (under 35-years old)	USD 500	USD 550	USD 650	USD 750
Non M.D./Non ENT	USD 500	USD 550	USD 650	USD 750
Accompanying Persons	USD 250			USD 300
Gala Dinner	USD 100 per person			

### Delegate registration fees include:

- Congress Materials (Final program, Abstract CD, Congress Bag)
- Admission to all Congress Sessions (Except for Instructional Courses for which an additional fee is required), Poster Areas and Exhibition
- Admission to the Opening and Closing Ceremonies
- Admission to the Luncheon Symposia
- Admission to the Welcome Reception, Korean Night
- Option to purchase tickets for the Gala Dinner
- Coffee Breaks
- Certificate of Attendance

### Accompanying Persons registration fees include:

- Admission to the Opening and Closing Ceremonies
- Admission to the Welcome Reception, Korean Night
- Admission to Exhibition
- Option to purchase tickets for the Gala Dinner
- Coffee Breaks

## Payment Options

### 1. Bank Wire Transfer

Bank Information	Bank Details
	<ul style="list-style-type: none"> <li>• <b>Bank Name:</b> Korea Exchange Bank SEOCHOJUNGANG Branch (Tel: +822-594-8907)</li> <li>• <b>Account Holder:</b> Korean Society of ORL-HNS</li> <li>• <b>Account Number:</b> 650-008057-318</li> <li>• <b>SWIFT BIC:</b> KOEXKRSE</li> </ul>

\* A duplicate or photocopy of the bank transfer statement with the applicant's name and address in addition to the payment details must be sent to the Congress Secretariat by fax or e-mail.

\* All bank service charges are to be paid by registrants. Checks will not be accepted. A confirmation letter will be sent to you after we have received your full payment.

### 2. Credit Cards

Registration fees may be paid by credit only through the secure online registration system at

[www.ifosseoul2013.com](http://www.ifosseoul2013.com) \* Only VISA, Master Card and JCB are accepted.

## Visa Requirements

All foreign visitors entering South Korea must possess a valid passport. National of most countries may enter visa-free for a maximum duration of 30 days, given possession of confirmed return or alternate destination tickets. For a list of countries with visa-free entries and countries under visa exemption agreements, please go to [www.mofat.go.kr/english/visa/apply/index.jsp](http://www.mofat.go.kr/english/visa/apply/index.jsp) For more specific information regarding visa requirements, please contact your local Korean consulate.

## Invitation Letters

Participants who require an official letter of invitation in order to attend the Congress should download the Invitation Letter Request Form from the congress website and send the completed form to [registration@ifosseoul2013.com](mailto:registration@ifosseoul2013.com)

# Getting to Seoul

Conveniently located in the heart of Korean peninsula, Seoul is served by two international airports bringing visitors from all around the world. Rated the world's best airport in 2004, and consecutively from 2006 to 2010 by Global Traveler, Incheon International Airport is served by 70 airlines, and handles over 1,400 direct flights each week from 176 major cities around the globe.

Following the completion of Incheon International Airport, Gimpo International Airport is mainly used for flights to and from major cities in China and Japan as well as domestic travel.

## From Airport to COEX



### 1. Railroad Express

Airport Railroad Express operates between Incheon International Airport and Seoul Station. Transfer to subway line number two (the Green line) at Hongik University Station which connects to Samseong Station at COEX Convention and Exhibition Center, the Congress venue.

### 2. Airport Limousine Bus

Bus schedule and tickets are available at the Transportation Information Counter (near exits No. 2, 4, 9 and 13) on the arrival floor (ground level) of the passenger terminal. All limousine buses operate between the hours 5:35 and 21:00 to COEX Convention and Exhibition Center and major hotels in the city. Limousine bus fares range from KRW 8,000 to 14,000 depending on number of stops.

### 3. Taxi

Taxis take approximately 70 minutes from Incheon International Airport to the venue. A regular taxi costs roughly KRW 70,000 (approx. USD 70) depending on traffic conditions in Seoul. The deluxe taxi fare is around KRW 90,000 (approx. USD 90). Toll of KRW 7,000 should be paid by patrons at the toll bridge. Car phone is available, and a receipt will be issued.

# Registration Form

June 1~5 · COEX Convention and Exhibition Center

On-line registration is strongly encouraged. Register on-line at [www.ifosseoul2013.com](http://www.ifosseoul2013.com) or complete the following form and e-mail it to [registration@ifosseoul2013.com](mailto:registration@ifosseoul2013.com) or fax to +822-3476-8800.

## [1] PERSONAL DETAILS (Please type or print clearly in capital letters)

Gender	<input type="checkbox"/> Male <input type="checkbox"/> Female		
Title	<input type="checkbox"/> Dr. <input type="checkbox"/> Prof. <input type="checkbox"/> Mr. <input type="checkbox"/> Ms. <input type="checkbox"/> Other _____		
Given (First) Name		Middle Name	
Family (Last) Name			
Department			
Organization			
Address			
City		State	
Postal Code		Country	
Telephone		Fax	
E-mail		Password (4-8 letters)	

\* The above e-mail address and password will function as your ID and password for the on-line registration and abstract submission system.

\* Special Requirements: Please specify dietary, wheelchair access or other requirements.

### ■ ACCOMPANYING PERSON(S)

- Mr.  Ms.  Other ( Please Specify \_\_\_\_\_ ) Name \_\_\_\_\_
- Mr.  Ms.  Other ( Please Specify \_\_\_\_\_ ) Name \_\_\_\_\_
- Mr.  Ms.  Other ( Please Specify \_\_\_\_\_ ) Name \_\_\_\_\_

## [2] Registration Fees \* Please mark (✓) the appropriate box.

	Early Bird Until Sep. 30, 2012	Advanced Until Nov. 30, 2012	Standard Until Feb. 28, 2013	On-site From Mar. 1, 2013	Subtotal
Physicians	<input type="checkbox"/> USD 650	<input type="checkbox"/> USD 750	<input type="checkbox"/> USD 850	<input type="checkbox"/> USD 950	USD
Fellows/Residents (under 35-year old)	<input type="checkbox"/> USD 500	<input type="checkbox"/> USD 550	<input type="checkbox"/> USD 650	<input type="checkbox"/> USD 750	USD
Non M.D./Non ENT	<input type="checkbox"/> USD 500	<input type="checkbox"/> USD 550	<input type="checkbox"/> USD 650	<input type="checkbox"/> USD 750	USD
Accompanying Persons	<input type="checkbox"/> USD 250 X _____ person(s)			<input type="checkbox"/> USD 300 X _____ person(s)	USD
Gala Dinner	<input type="checkbox"/> USD 100 X _____ person(s)				USD
<b>Total</b>	<b>USD _____</b>				

\* **Non M.D. and Non ENT registrants, including but not limited to, technicians and nurses**, are required to provide a copy of an official verification letter of status/ID to the congress secretariat by fax or e-mail.

\* **If you are a resident, fellow or student in training** under 35 years old, your registration cannot be confirmed without a written verification of your status and a copy of passport. Please download the verification form from [www.ifosseoul2013.com](http://www.ifosseoul2013.com) and send it to the Congress Secretariat along with a copy of your passport by fax (+822-3476-8800) or e-mail ([registration@ifosseoul2013.org](mailto:registration@ifosseoul2013.org)).

Continued on the next page →



### [3] Payment Details

#### 1. Bank Wire Transfer

<b>Bank Information</b>	<ul style="list-style-type: none"> <li>▪ <b>Bank Name:</b> Korea Exchange Bank SEOCHOJUNGANG Branch (Tel: +822-594-8907)</li> <li>▪ <b>Account Holder:</b> Korean Society of ORL-HNS</li> <li>▪ <b>Account Number:</b> 650-008057-318</li> <li>▪ <b>SWIFT BIC:</b> KOEXKRSE</li> </ul>
-------------------------	--

- \* A duplicate or photocopy of the bank transfer statement with the applicant's name and address in addition to the payment details must be sent to the Congress by fax or e-mail.
- \* All bank service charges are to be paid by the applicants. Checks will not be accepted. A confirmation letter will be forwarded to you after we have received your full payment.

#### 2. Credit Cards

Registration fees may be paid by credit only through the secure online registration system at [www.ifosseoul2013.com](http://www.ifosseoul2013.com)  
Only VISA, MasterCard and JCB are accepted.

### [4] Cancellation and Refund Policy

- \* All cancellations must be submitted in writing via fax or e-mail to the Congress secretariat.
- \* All refunds will be processed after the completion of the IFOS 2013 World Congress according to the following policy, and all processing fees will be deducted from the reimbursement.
  - **Up to December 31, 2012:** USD 100 will be deducted from the registration fee for administration charges.
  - **Up to March 31, 2013:** 50% of the registration fee will be refunded.
  - **From April 1, 2013:** No refunds will be given for cancellations received on or after this date.
- \* If you do not attend the congress without notice of cancellation, no refund will be given.

### [5] Visa & Passport

All foreign visitors entering South Korea must possess valid passports. Nationals of most countries may enter visa-free for a maximum duration of 30 days, given possession of confirmed return or alternate destination tickets. For a list of countries with visa-free entries and countries under visa exemption agreements, please go to [www.mofat.go.kr/english/visa/apply/index.jsp](http://www.mofat.go.kr/english/visa/apply/index.jsp) For more specific information regarding visa requirements, please contact your local Korean consulate.

### Retain a copy for your records

I hereby confirm the above registration and also certify that I have read and understood the terms of the registration details as well as the cancellation policy, which I accept without any restrictions.

Date (mm/dd/yy):

Signature:

-----

[Congress Secretariat] **Tel** +822-3476-7700 **Fax** +822-3476-8800 **E-mail** [registration@ifosseoul2013.com](mailto:registration@ifosseoul2013.com)





## Congress Secretariat

**KOCOPEX**

Korea Convention Services Ltd.

Suite 220, 27 Umyeon-ro 24-gil, Seocho-gu, Seoul, Korea

Tel +822-3476-7700 Fax +822-3476-8800

**General inquiries** ..... | [info@ifosseoul2013.com](mailto:info@ifosseoul2013.com)

**Registration** ..... | [registration@ifosseoul2013.com](mailto:registration@ifosseoul2013.com)

**Scientific Program** ..... | [scientific@ifosseoul2013.com](mailto:scientific@ifosseoul2013.com)

**Abstracts**..... | [abstract@ifosseoul2013.com](mailto:abstract@ifosseoul2013.com)

**Exhibition & Sponsorship**..... | [exhibition@ifosseoul2013.com](mailto:exhibition@ifosseoul2013.com)